



Lower Cross

Clearwell, Coleford, Gloucestershire, GL16 8JX

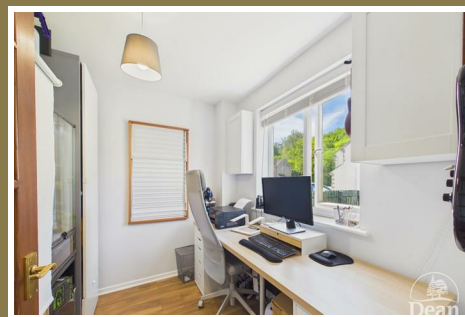
£300,000



A well-presented and thoughtfully laid out home, offering bright and versatile accommodation throughout, complemented by attractive outdoor space.

The property is approached via a private driveway providing off-road parking, with a neatly maintained front lawn and pathway leading to the entrance. Internally, the home offers a welcoming entrance hallway, a spacious lounge with feature fireplace and stairs to the first floor, with double doors opening onto the rear garden creating a bright and inviting living space. The kitchen is well-equipped with fitted units, integrated appliances and ample worktop space, with direct garden access. There is also a useful additional room currently used as a home office. Upstairs, the property benefits from three well-proportioned bedrooms and a modern family bathroom fitted with a bath, wash hand basin and WC. To the rear, the enclosed low-maintenance garden features a generous decked seating area, gravelled section and timber shed, all backing onto greenery for a good degree of privacy and a peaceful outlook.

Clearwell is a highly sought-after village nestled on the edge of the Royal Forest of Dean, renowned for its charm, history and beautiful surroundings. Offering a peaceful, semi-rural lifestyle, the village is steeped in character with its period properties, traditional cottages and the iconic Clearwell Castle at its heart.



Approached via a UPVC double glazed front door into:

Entrance Hallway:

7'10" x 3'5" (2.40m x 1.05m)

Door to office, flows into lounge, coat hooks, power & lighting, radiator.

Office:

7'6" x 8'0" (2.29m x 2.46m)

Double glazed UPVC window to front aspect, radiator, power & lighting.

Lounge:

15'2" x 11'10" (4.63m x 3.61m)

Door to kitchen, feature fireplace, double glazed UPVC French doors to rear garden, stairs to first floor landing, power & lighting, radiator.

Kitchen/Dining Room:

16'9" x 7'10" (5.11m x 2.39m)

A range of wall units & base units, electric oven with grill, dual aspect double glazed UPVC window & rear door, electric hob with extractor hood, sunken stainless steel one & a half bowl sink with mixer tap, radiators, space for table and chairs.

First Floor Landing:

2'8" x 5'6" (0.82m x 1.70m)

Doors to bedrooms & bathroom, loft access, smoke alarm, lighting.

Bedroom One:

11'1" x 8'9" (3.40m x 2.67m)

Double glazed UPVC window to rear aspect, radiator, built in cupboard, power & lighting.

Bedroom Two:

8'9" x 7'9" (2.69m x 2.38m)

Dual aspect double glazed UPVC windows, power & lighting, radiator.

Bedroom Three:

11'9" x 6'8" (3.59m x 2.04m)

Double glazed UPVC window to front aspect, radiator, airing cupboard, power & lighting.

Bathroom:

9'4" x 4'9" (2.86m x 1.46m)

Frosted UPVC double glazed window, W.C., hand wash basin with storage & mirror above, heated towel rail, panelled bath with electric rainfall shower over, lighting, extractor fan.

Outside:

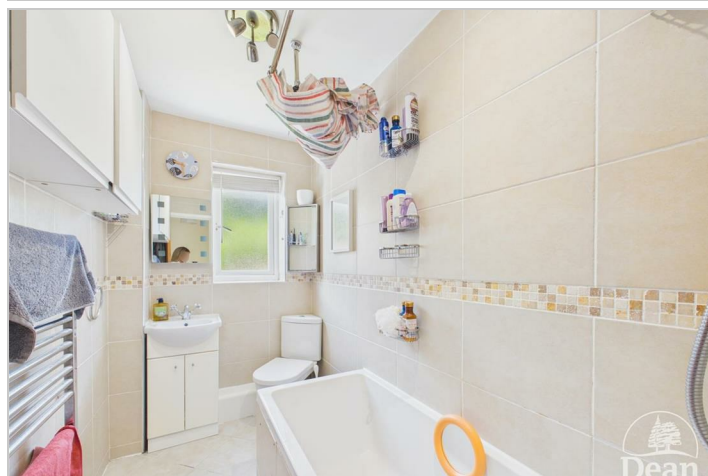
Tel: 01594 835751

To the front, the property benefits from a neatly laid lawn with a pathway leading to the entrance, creating a welcoming approach. There is also a private driveway providing off-road parking. The boundaries are defined with fencing and low-level walling, adding to the overall kerb appeal.

To the rear, the garden has been thoughtfully designed for ease of upkeep and entertaining, featuring a generous raised decked seating area—perfect for outdoor dining and relaxing. This is

complemented by a gravelled section providing additional usable space, along with a useful timber storage shed. The garden is enclosed by fencing and backs onto greenery, offering a pleasant outlook and a good degree of privacy.

Overall, the outside space offers a great balance of practicality and enjoyment, with minimal maintenance required and versatile areas for both relaxing and entertaining.



Consumer Notes: Dean Estate Agents Ltd have prepared the information within this website/brochure with care and co-operation from the seller. It is intended to be indicative rather than definitive, without a guarantee of accuracy. Before you act upon any information provided, we request that you satisfy yourself about the completeness, accuracy, reliability, suitability or availability with respect to the website or the information, products, services, or related graphics contained on the website for any purpose.

These details do not constitute any part of any Offer, Contract or Tenancy Agreement.

Photographs used for advertising purposes may not necessarily be the most recent photographs, although every effort is made to update photographs at the earliest opportunity. Any reliance you place on such information is therefore strictly at your own risk. All photographic images are under the ownership of Dean Estate Agents Ltd and therefore Dean Estate Agents retain the copyright. You must obtain permission from the owner of the images to reproduce them.

Tenanted Property – we are not always able to show the most recent condition of a property due to tenants' privacy and we may choose to show the photographs of the property when it was last vacant to at least allow clients some idea of the internal condition. Therefore, we would of course, urge you to view before making any decisions to purchase or rent the property and before any costs.

Energy Performance Certificates are supplied to us via a third party and we do not accept responsibility for the content within such reports.

PRC Certificates – Some ex-local authority properties have been repaired in recent years using the PRC Scheme wherein a certificate has been produced by a qualified property engineer. This certificate does not imply the suitability for a mortgage approval and you must satisfy yourself of the work carried out that may meet your lenders criteria.

As with leasehold property or new build development sites, you are likely to be responsible for a contribution to management charges and/or ground rent or a contribution to the development service charge. Please enquire at the time of viewing.

You may also incur fees for items such as leasehold packs and, in addition, you will also need to check the remaining length of any lease before you complete a mortgage application form.

Please ask a member of our team for any help required before committing to purchase a property and incurring expense.

Road Map



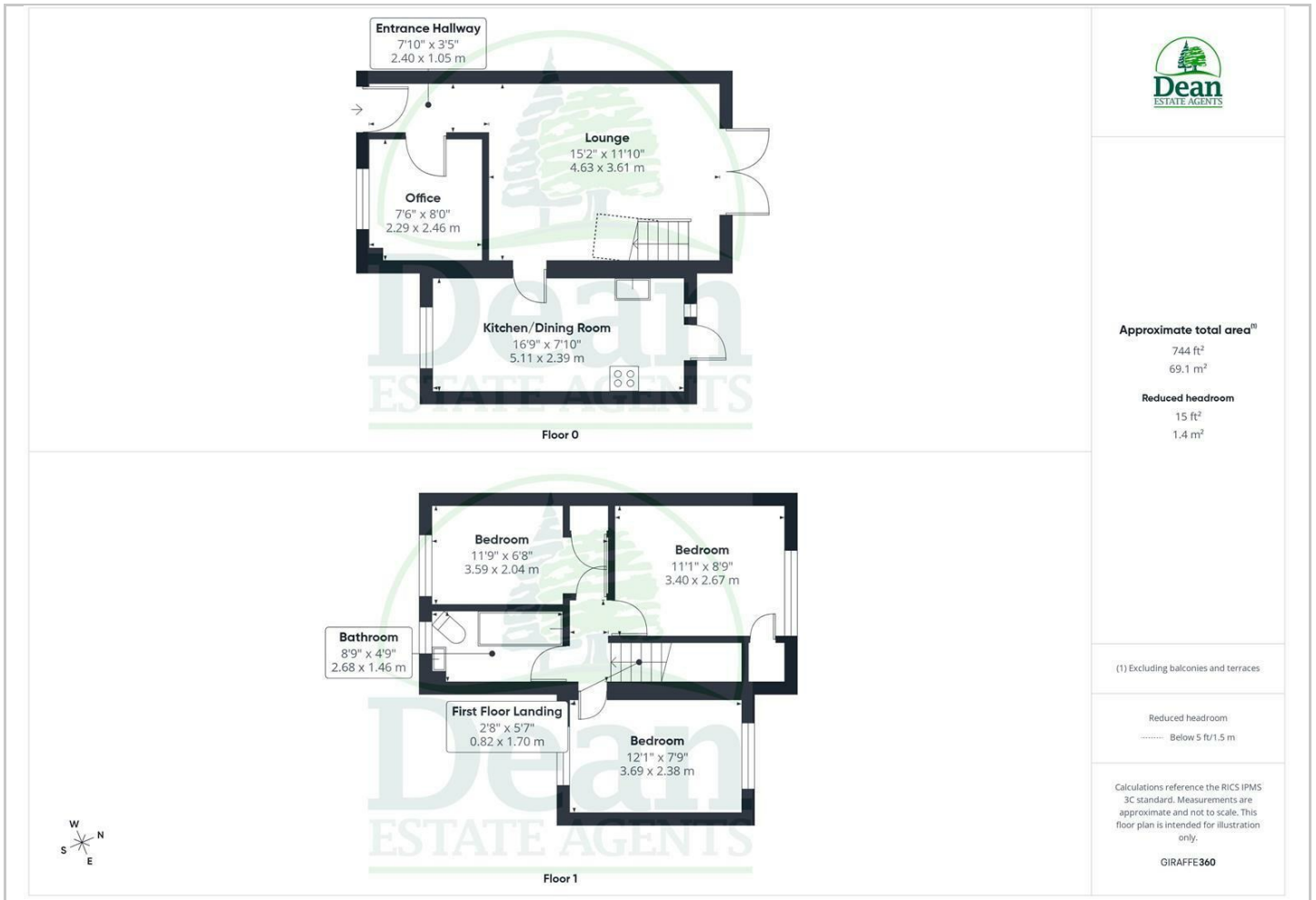
Hybrid Map



Terrain Map



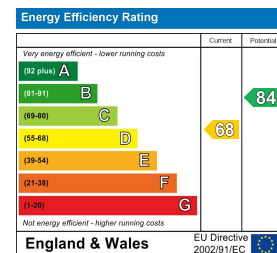
Floor Plan



Viewing

Please contact our Coleford Office on 01594 835751 if you wish to arrange a viewing appointment for this property or require further information.

Energy Efficiency Graph



These particulars, whilst believed to be accurate are set out as a general outline only for guidance and do not constitute any part of an offer or contract. Intending purchasers should not rely on them as statements of representation of fact, but must satisfy themselves by inspection or otherwise as to their accuracy. No person in this firm's employment has the authority to make or give any representation or warranty in respect of the property.